



# Contextmenu's

Stan Philipsen

Sanne Derckx

Ko Stoffelen

# Inhoudsopgave



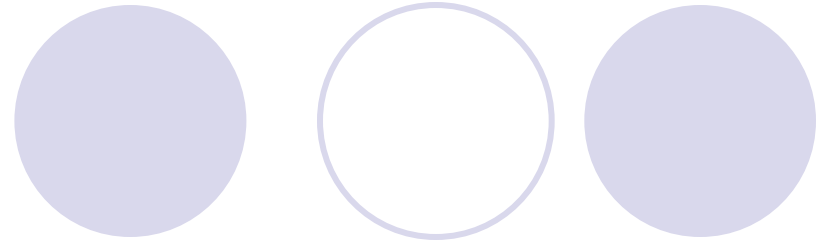
- Werk tot nu toe
- Gebruikerseisen menu's
- Traditionele contextmenu

vs.

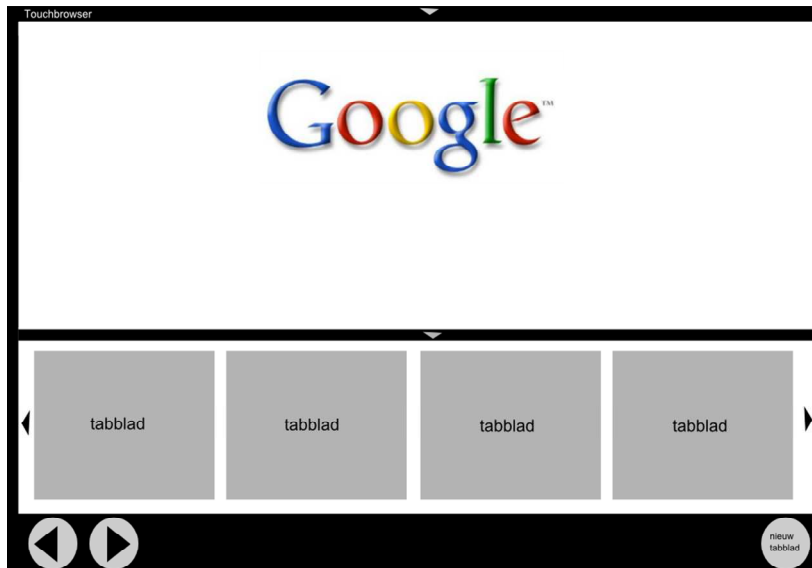
Onze oplossing

- Conclusie

# Werk tot nu toe



- Eerst volledige interface
- Nu slechts het contextmenu



# Gebruikerseisen menu's

A decorative horizontal row of five circles. From left to right: a solid light purple circle, an outlined light purple circle, a solid light purple circle, an outlined light purple circle, and a solid light purple circle.

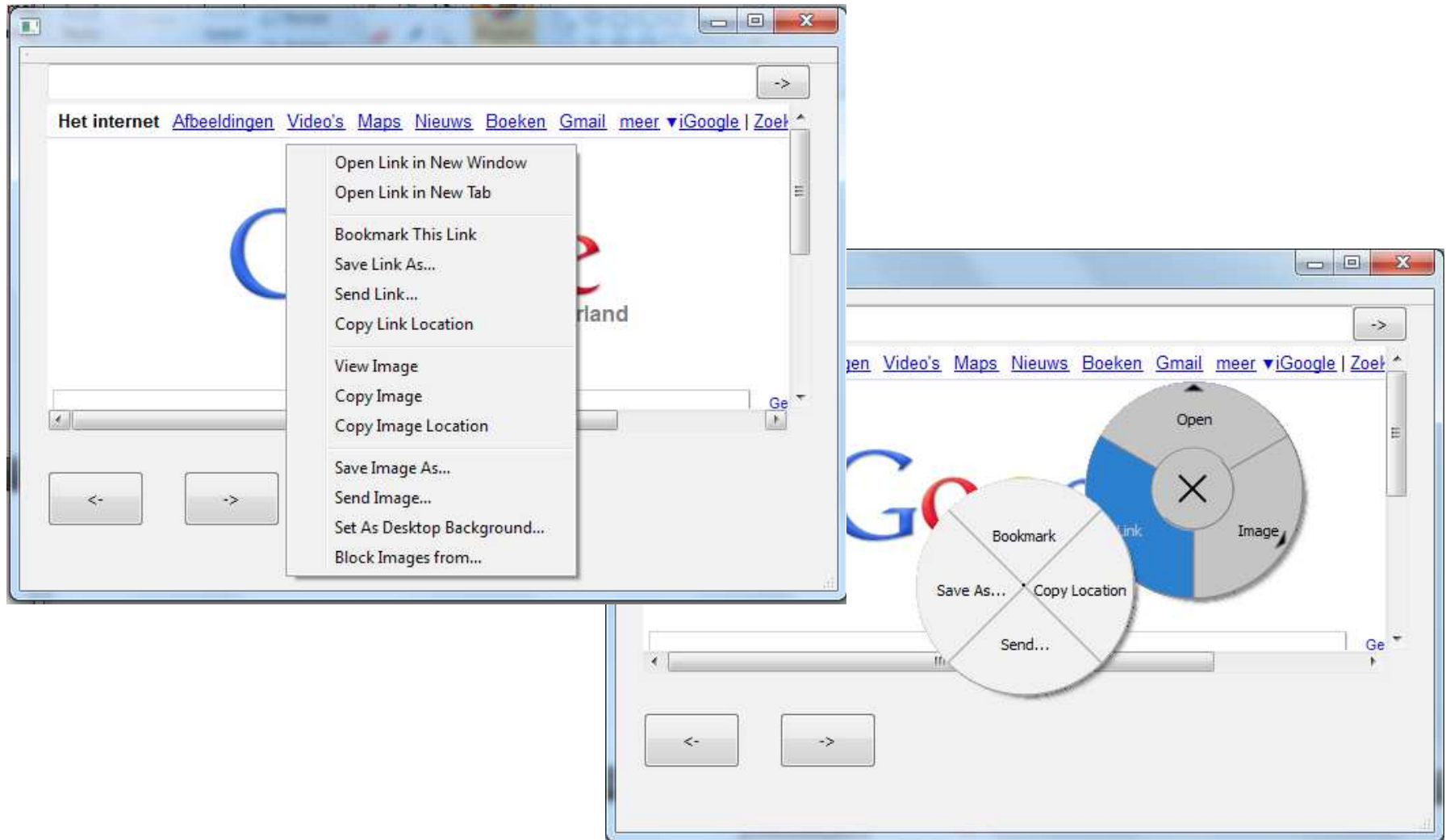
- Knoppen groot genoeg
- Overzicht
- Logisch geordend

# Gebruikerseisen menu's



- Nokia: knoppen 8x8mm, vrije ruimte 2mm
- Canonical: knoppen 10x10mm
- Microsoft: knoppen 7x7mm, vrije ruimte 2mm
  
- Gemiddeld: 10x10mm ruimte

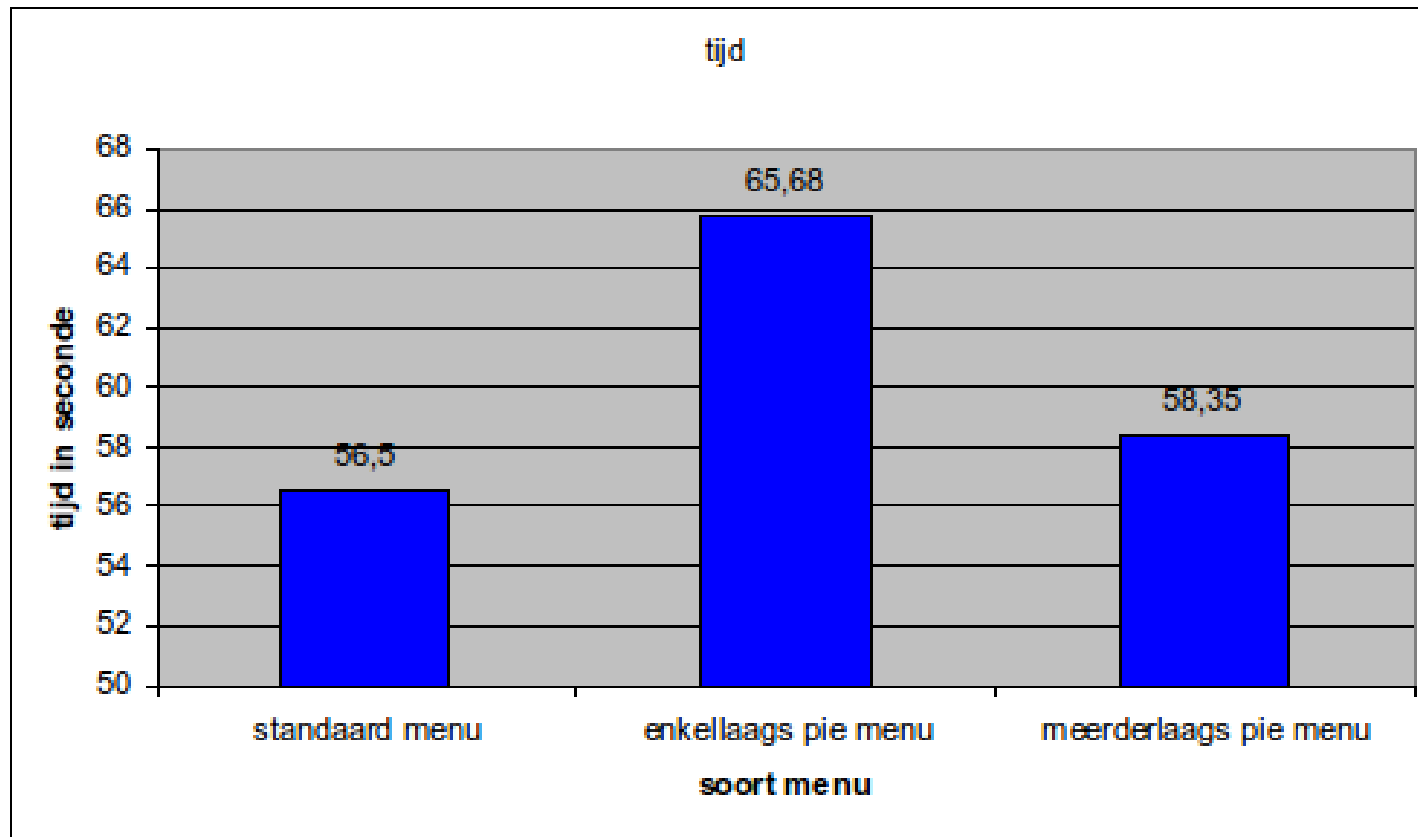
# Traditioneel vs. Pie menu



# Traditioneel vs. Pie menu

- Getest op
  - Snelheid
  - Aantal fouten
- Gelet op
  - Computerervaring
  - Touchscreenervaring

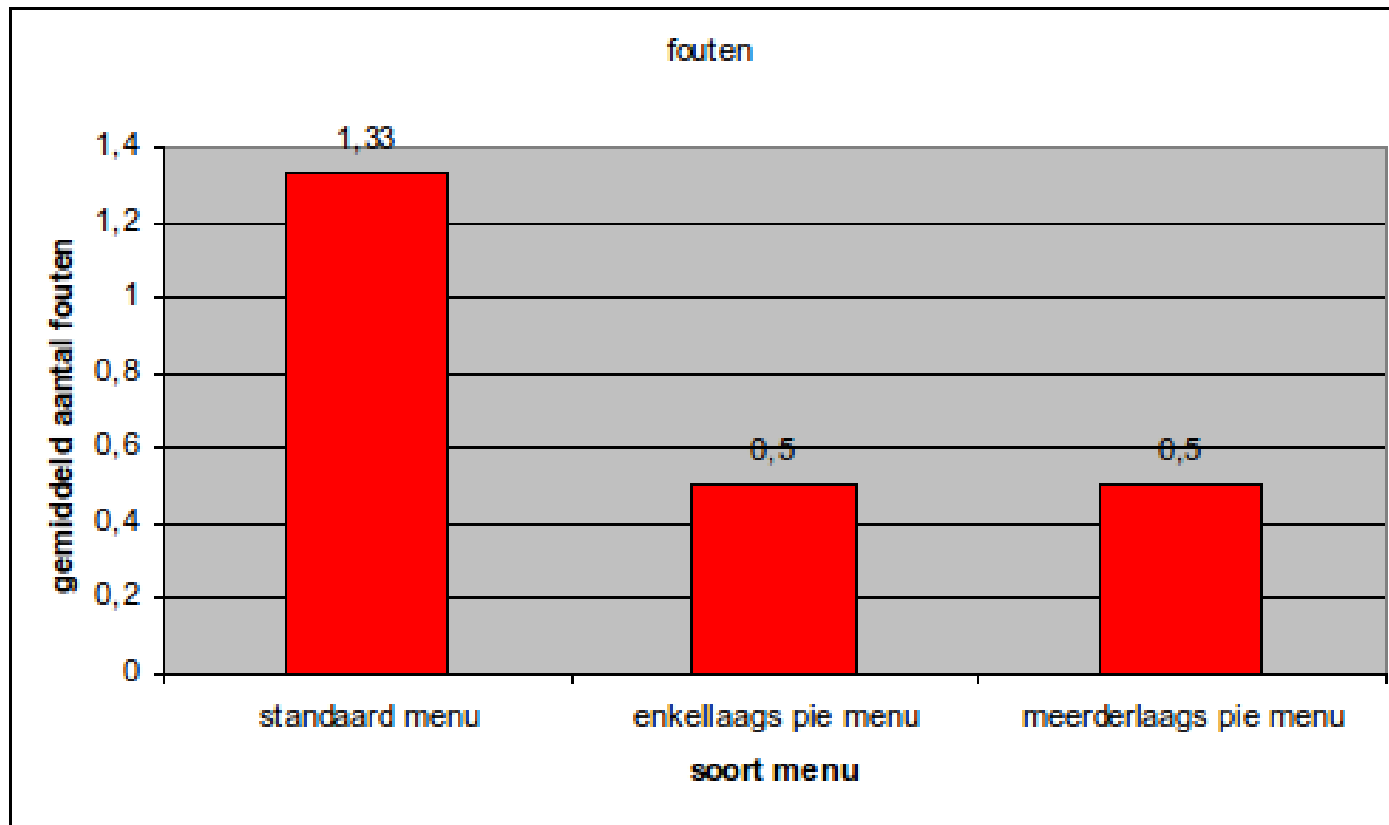
# Traditioneel vs. Pie menu



- Enkellaags pie menu erg traag
- Verschil meerderlaags pie menu en traditioneel menu is klein



# Traditioneel vs. Pie menu



- Groot verschil in het aantal fouten

# Conclusie

A decorative graphic at the top of the slide consists of two groups of three circles. The left group has a solid purple circle on the left, a white circle with a purple outline in the middle, and a solid purple circle on the right. The right group has a solid purple circle on the left, a white circle with a purple outline in the middle, and a solid purple circle on the right.

- Traditioneel contextmenu
  - Veel fouten
  - Snel
- Enkellaags pie menu
  - Weinig fouten
  - Traag
- Meerderlaags pie menu
  - Weinig fouten
  - Snel

Nog vragen?

